

Artemisia - Growing Guide

Artemisia - Growing Guide

Mugwort, Sagebrush

Artemisia are common UK garden plants and entirely hardy. They are grown for their impressive foliage effect which comes from their aromatic grey or silver leaves. Most of the varieties which we offer are evergreen but *A. ludoviciana* 'Silver Queen' is not. The flower heads of Artemisia are generally of little real interest but the plants do have many uses in the rockery or herbaceous border.

Apart from the dwarf growing varieties both perennial and, also, evergreen species are best cut back hard to the base of the plant in the spring to maintain their compact habit and to generally tidy them up and prevent them getting 'leggy'.

A. ludoviciana 'Silver Queen' is a rhizomatous perennial from N. America growing up to 3 or 4ft eventually from a 2ft wide clump. It has lance shaped leaves which are covered with a silvery-white down. This makes an excellent contrast with other nearby herbaceous plants which grow to a similar or taller height and have green leaves or colourful flowers. The flower heads in late summer are brownish-yellow.



Artemisia ludoviciana
'Silver Queen'



Artemisia ludoviciana
'Silver Queen'



Artemisia 'Powis Castle'



Artemisia schmidtiana
'Nana'



Artemisia schmidtiana
'Nana'



Artemisia schmidtiana
'Nana'



Artemisia schmidtiana
'Nana'



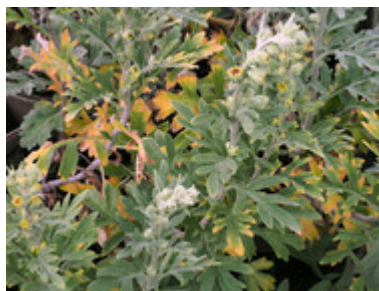
Artemisia schmidtiana
'Nana'



Artemisia schmidtiana
'Nana'



Artemisia stelleriana
'Boughton Silver'



Artemisia stelleriana
'Boughton Silver'



Artemisia stelleriana
'Boughton Silver'

All these forms of Artemesia are most easily propagated by lifting and dividi

Burncoose Nurseries: Gwennap, Redruth, Cornwall TR16 6BJ

Telephone: +44 (0) 1209 860316 Fax: +44 (0) 1209 860011 Email: info@burncoose.co.uk

© Burncoose Nurseries 1997 - 2022