

Leylandii (x Cupressocyparis) - Growing Guide

Growing Leylandii

x Cupressocyparis leylandii

And so to the biggest garden thug of all in the garden! We seem to spend half the time here cutting down greedy leylandii hedges because we hate and detest them and half the time planting them again as new windbreaks because they grow so quickly and efficiently.

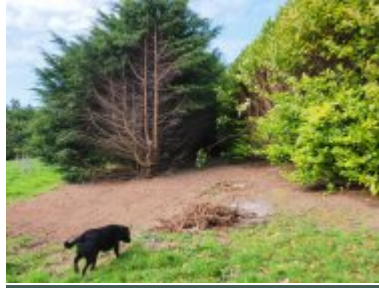
x Cupressocyparis leylandii is a hybrid genus created by a cross between Chamaecyparis and Cupressus. It is the fastest growing conifer ever created and was first raised in Northern Ireland in 1962. It can easily grow 2-3ft a year and achieve 45ft in only about 15 years. It grows as fast as a eucalyptus!

This is why, as a hedging plant, it causes so much dispute and hassle between neighbours when rows of leylandii obscure light to properties and take all the moisture out of the ground causing subsidence to properties as the roots grow with age.

It is perfectly possible to clip and train leylandii into a formal hedge at 6-10ft in height but this requires a great deal of work and trimming more than once a year. As a long term project the leylandii will generally beat you. If you cut a leylandii back beyond the new growth to old wood it will not reshoot and you will be left with a 'dead' area in part of the tree.



Leylandii no new growth



Leylandii dead on one side



leylandii over-trimmed



leylandii over-trimmed

So it is a love/hate plant which has great value in the right context and very little – quite the reverse – in so many others!



x Cupressocyparis leylandii



x Cupressocyparis leylandii



x Cupressocyparis leylandii 'Castlewellan'



x Cupressocyparis
leylandii 'Castlewellan'



x Cupressocyparis
leylandii 'Castlewellan'

Burncoose Nurseries: Gwennap, Redruth, Cornwall TR16 6BJ

Telephone: +44 (0) 1209 860316 Fax: +44 (0) 1209 860011 Email: info@burncoose.co.uk

© Burncoose Nurseries 1997 - 2022