

## Pachysandra terminalis - Growing Guide

### Pachysandra Terminalis - Growing Guide

#### *Mountain spurge*

This evergreen plant is invaluable to gardeners faced with bare patches of ground under trees or in very shady parts of the garden because they will carpet areas where little else will grow and thrive. *P. terminalis* is a 'shrublet' or dwarf shrub which is native to Japan.

They have rhizome like fleshy roots and stems with upright branches. The leaves are a glossy dark green and clustered at the ends of the short smooth stems in a diamond shape with teeth. Spikes of greenish white unisexual flowers are produced in February and March at the ends of the previous year's growth.

*P. terminalis* grows to around 8in in height and few plants produce such a carpet of greenery in the most difficult parts of the garden. They thrive in moist or dryish soil under trees but are perfectly well suited to full sun where the leaves may become a bit yellowish by the end of the summer.



Pachysandra terminalis



Pachysandra terminalis



Pachysandra terminalis



*Pachysandra terminalis*

*P. terminalis* 'Green Carpet' is a more compact form with smaller more finely toothed leaves.



*Pachysandra terminalis*  
'Green Carpet'



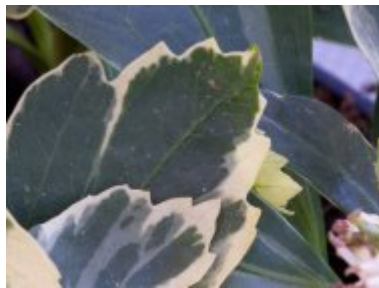
*Pachysandra terminalis*  
'Green Carpet'



*Pachysandra terminalis*  
'Green Carpet'



*Pachysandra terminalis*  
'Variegata'



*Pachysandra terminalis*  
'Variegata'



*Pachysandra terminalis*  
'Variegata'