

Pseudotsuga menziesii - Growing Guide

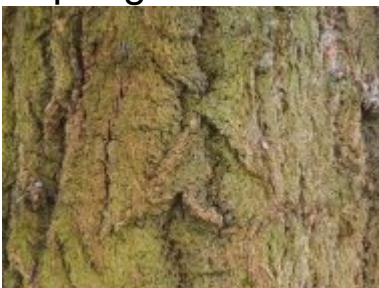
Growing Pseudotsuga Menziesii

Douglas fir

This is a North American conifer much used in timber production which can also be used in a parkland context as a statuesque conical specimen tree or a small landscape clump that, in the right conditions, can grow up to 150ft in height. Pseudotsuga differ from Abies in that they have pendant rather than upright cones and from Picea in its three lobed cone bracts. The name of the genus implies that it resembles Tsuga but, in reality, its cones resemble those of Picea.

Douglas fir was introduced to the UK by Douglas in 1827. It grows best in high rainfall areas and needs a reasonable soil. It will not grow nearly as well in dry conditions, thin soils or in very exposed locations. Male and female stroboli are produced on the same tree and the female cones are rounded to conical and 3-4in long. The bark in young trees is smooth and grey becoming thick, ridged and corky in maturity.

Seed extracted from the female cones should be sown in pots outdoors in the spring.



Pseudotsuga menziesii



Pseudotsuga menziesii



Pseudotsuga menziesii



Pseudotsuga menziesii



Pseudotsuga menziesii



Pseudotsuga menziesii



Pseudotsuga menziesii



Pseudotsuga menziesii



Pseudotsuga menziesii



Pseudotsuga menziesii

View this video on Youtube here <https://www.youtube.com/om6oxC0-FLw>

Burncoose Nurseries: Gwennap, Redruth, Cornwall TR16 6BJ

Telephone: +44 (0) 1209 860316 Fax: +44 (0) 1209 860011 Email: info@burncoose.co.uk

© Burncoose Nurseries 1997 - 2021